

# Collage™

A Matrex / Leggett & Platt Product



## Elastomeric Fabrics For Seating Suspensions

Office • Residential • Health Care • Transportation

*Custom-engineered to meet  
the most demanding specifications.*

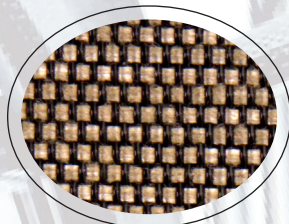


**Matrex®**

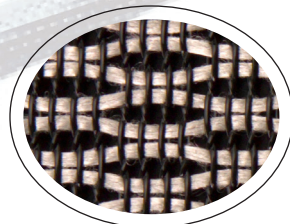
A DIVISION OF *Leggett & Platt* COMPONENTS COMPANY, INC.

911 Northridge St. • Greensboro, NC 27403  
ph. 336-379-7777 • fax 336-379-7774  
[www.Matrex.net](http://www.Matrex.net)

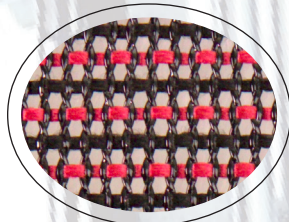
COLLAGE™ fabrics have a polyester co-polymer elastomeric monofilament on the warp direction. When stretched, this material yields excellent load-bearing properties and resiliency. The fill yarns may be polyester, nylon, or other fiber depending on the intended use.



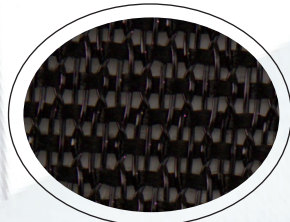
W-60



W-09



W-02



W-18

## Patterns

COLLAGE™ is available in many different weave patterns, including jacquards, which are also available with specific designs and logos.

## Colors

COLLAGE™ is available in many different colors, including custom colors.

## Application

COLLAGE™ fabrics must be tensioned for the fabric to work properly and yield a comfortable, resilient seat. We generally recommend to stretch the fabric 5%. COLLAGE™ fabrics can be sewn, stapled, and adhesive-bonded to other substrates.

## Cleanability

Use mild household or hospital detergents. DO NOT use petroleum distillates.

## Tests

Properly applied, COLLAGE™ fabrics typically show less than 5% load-bearing loss when tested according to BIFMA standards.

| Test Procedures                                       | Test Results                              |               |
|---|---|---------------|
| Yarn Slippage (Ibf)<br>ASTM D 4034-92                 | Warp<br>63.3                              | Fill<br>42.0  |
| Colorfastness to Water<br>ASTM D 3597-95a, Sec. 7.6   | Shade: 5<br>Stain: 5                      |               |
| Colorfastness to Solvent<br>ASTM D 3597-95a, Sec. 7.7 | Shade: 5<br>Stain: 5                      |               |
| Resistance to Pilling<br>ASTM D 3511-82 (Brush)       | 5 – No Pilling                            |               |
| Breaking Strength<br>ASTM D 5034-95 (Grab)            | Warp<br>406.7                             | Fill<br>233.0 |
| Resistance to Pilling<br>ASTM D 3511-99 (Brush)       | 5 – No Pilling                            |               |
| Surface Abrasion<br>ASTM D 3597-95A, Sec. 7.4         | Passed 50,000 Cycles<br>+50,000 Wyzenbeck |               |
| Abrasion Resistance                                   | Dry – 4.5<br>Wet – 5                      |               |
| Colorfastness to Crocking<br>AATCC 8-2001             | After 40 Std. Hours<br>Grade 5            |               |
| Colorfastness to Light<br>AATCC 16-2003 (Opt. 3)      |   |               |

### British Standards 5852: Section 4, 12.4

| Ignition Source | Test Results   |
|-----------------|--|
| Butane Flame    | #1 PASS<br><br>(No flaming or progressive smouldering) |

### British Standards 5852: Section 4, 12.2

| Ignition Source | Test Results   |
|-----------------|--|
| Cigarette       | #1 PASS<br><br>(No flaming or progressive smouldering) |

Note: Test results will vary depending on specific weave. Other flammability requirements may be met depending on specifications.



A DIVISION OF *Leggett & Platt* COMPONENTS COMPANY, INC.

911 Northridge St. • Greensboro, NC 27403  
ph. 336-379-7777 • fax 336-379-7774  
www.Matrex.net