

CINCH-LOC™

The most effective upholstery method for seating to be utilized by the Upholstery Industry.

Improves the quality of your upholstery

- Provides shape and pattern consistency from seat to seat.
- Easy to apply.
- Reduces operator fatigue.

Fabric Savings

- Precision cutting eliminates waste.
- Fabric yield increased +20%

Reduces Labor Cost

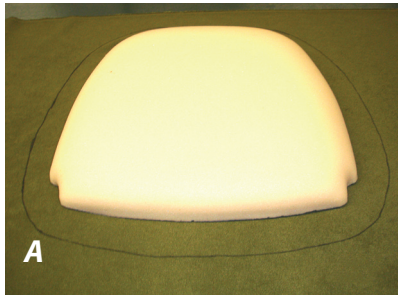
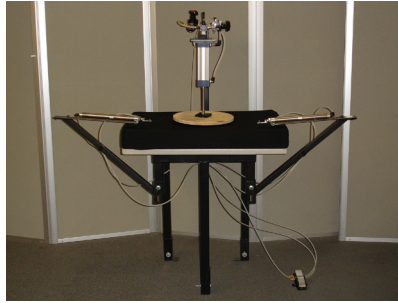
- Average operator production 400 seats per day.
- Facilitates upholstery.
- Facilitates cross-training
- Improves cell efficiencies

Cinch-Loc is a simple, easy method for upholstery. It is a textile tape that encapsulates a draw cord. The product is sewn to the perimeter of a seat pattern, and the cord is pulled and attached while the seat is in a compressed state. The seat pattern is generally 1" over the perimeter of the seat, depending on foam thickness. Furniture Manufacturers are discovering the simplicity of **Cinch-Loc**. We invite you to join with them in discovering new and better efficiencies for your upholstery department.



A *Leggett & Platt* COMPANY

911 Northridge Street • Greensboro, NC 27403
Phone: 336-379-7777 • Fax: 336-379-7774



Establish Pattern

Sew Cinch Loc to fabric



Assembly ready

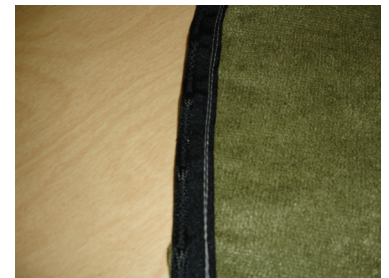
Compress Foam and pull cord



Staple excess cord to Seat board

Cinch Loc is available in festooned boxes of 2000 yds or single spools of 300 yds.

Cinch Loc is normally made in black at 20 mm wide. Other colors and sizes may be available.



Attachment by sewing – superior to stapling

Finished seat

